



HONG KONG
HOUSING SOCIETY
香港房屋協會



HKHS
"Age-friendly Housing"
Seminar

Ageing in Place in Hong Kong, from Present to Future: The Elderly Services Programme Plan (ESPP)

Professor Alfred Chan
Chairman, Elderly Commission
Director, Asia-Pacific Institute of Ageing Studies
Lingnan University

4 November 2015

Policy Review in HK: An example in elderly services

- **2014-2015 CE Policy Address**: assign a key policy task for Elderly Commission to do a Policy Review as well as to map the future services up to 2030:
- Elderly Services Programme Plan (ESPP)

Why Review at this point?

- No programme plans or reviews since 2000
- Demands from professionals/public/NGOs
- Services to the elderly accounted for 19% (and escalating) of the total expenditure
- Cries for more staff & space
- Big data are more available: e.g. health profile, poverty line, population ageing
- EC's own commissioned studies: residential & community supports (2009-2011)

Why EC?

- EC is a policy advisory body directly accountable to CE
- EC has a remit to advise on and co-ordinate elderly policies
- EC has all the key players: Government Bureaus & experts
- With LWB as the secretariat: primarily concerning those elders in need

The preparation: setting up a separate & independent mechanism

- Working Group for ESPP under the EC
- A special team to support the Review:
1xPAS(D2), 1xE0 & 1xSecretary
- Commissioning a team of consultants for drawing up the plan, public consultation & implementation → Team consisting academics & professionals from 5 universities led by HKU

Policy Review Objectives for Elderly Services

- Principles in Long-Term Care Policy for the Elderly Care:
 - *Enabling our elderly citizens to live in dignity and providing necessary support for them to promote their sense of belonging, sense of security and sense of worthiness;*
 - *Ageing in place as the core, institutional care as back-up*
 - *Those who are most in need should have priority in using subsidized LTC services*

Three phases of the Review:

The forming Stage: October 2014 – January 2015

- To collect service items stake holders frequently concerned with
 - Target user respondents: SEs, DEs, primary carers & service providers
 - Methods: surveys, in-depth interviews & focus groups
- More social welfare focused; so team's effort to get a broader base response, health, housing, transport, education etc..**esp. those age friendly items**

Scoping stage:

February 2015 - August 2015

- Data collected from the forming stage to form initial theme priorities (6):
- Defining 'old age' for services
- **Provision of services:** *active ageing, community support & care, carer support, residential care, interfaces for services & service quality monitoring*
- Staffing & training
- **Space & facilities**
- Funding & sustainability
- **Others:** *including but not limited to: demented, ethnic minorities & end of life care*

Scoping Stage:

February 2015 - August 2015

- Methods: 20+ workshops
- 5 public consultations (town Hall type)
- Report refined as we go along:
<http://espp.socialwork.hku.hk/images/scopingreport/ScopingReportFinal.pdf.pdf>
 - 400+ policy items after the workshops
 - provided to public in the 5 public consultations
- Working Group meetings to endorse the processes & reports
- Submitted to EC for acceptance & ways forward

Building Consensus:

September 2015 - December 2015

- December for initial policy framework
- Jan – Feb 2016 preparation
- March-May 2016 Consensus building work
- June-August 2016 final ESPP
- September 2016 EC approval
- October 2016 Final report to CE

Responding to UN MIPAA & WHO Age Friendly calls

- UN MIPAA = Madrid International Plan of Action on Ageing 2002, a policy framework for ageing society
- WHO Age Friendly Cities protocol = WHO accredits a place for age friendliness based on 8 domains, now harmonized into
- the 4 Priority areas of Active Ageing below



Insights Gained

- Not as contentious as it was expected
- Occasional objections for out-of-line demands e.g. vouchers not to be allowed in private sectors
- What public wants = LEGCO agrees
- New issues: disabled & carers getting old
- ESPP will form a new consultation standard for new policy or policy reviews

Selected Items for Action

Social & Health Services

- Services & policy integration: [all bureaus](#)
- Services to support dementia care: [all ages starting from schools](#)
- Training for elder care workers: adoption of [QF](#)
- Premises for integrated uses (all ages, more flexibilities)

Securities

- Housing for elders, all types: [land allocation for HKHS?](#)
- Retirement protection for those in need: [World Bank's 5-pillars ?](#)
- Post retirement employment: [employees & employers preparation?](#)

Participation

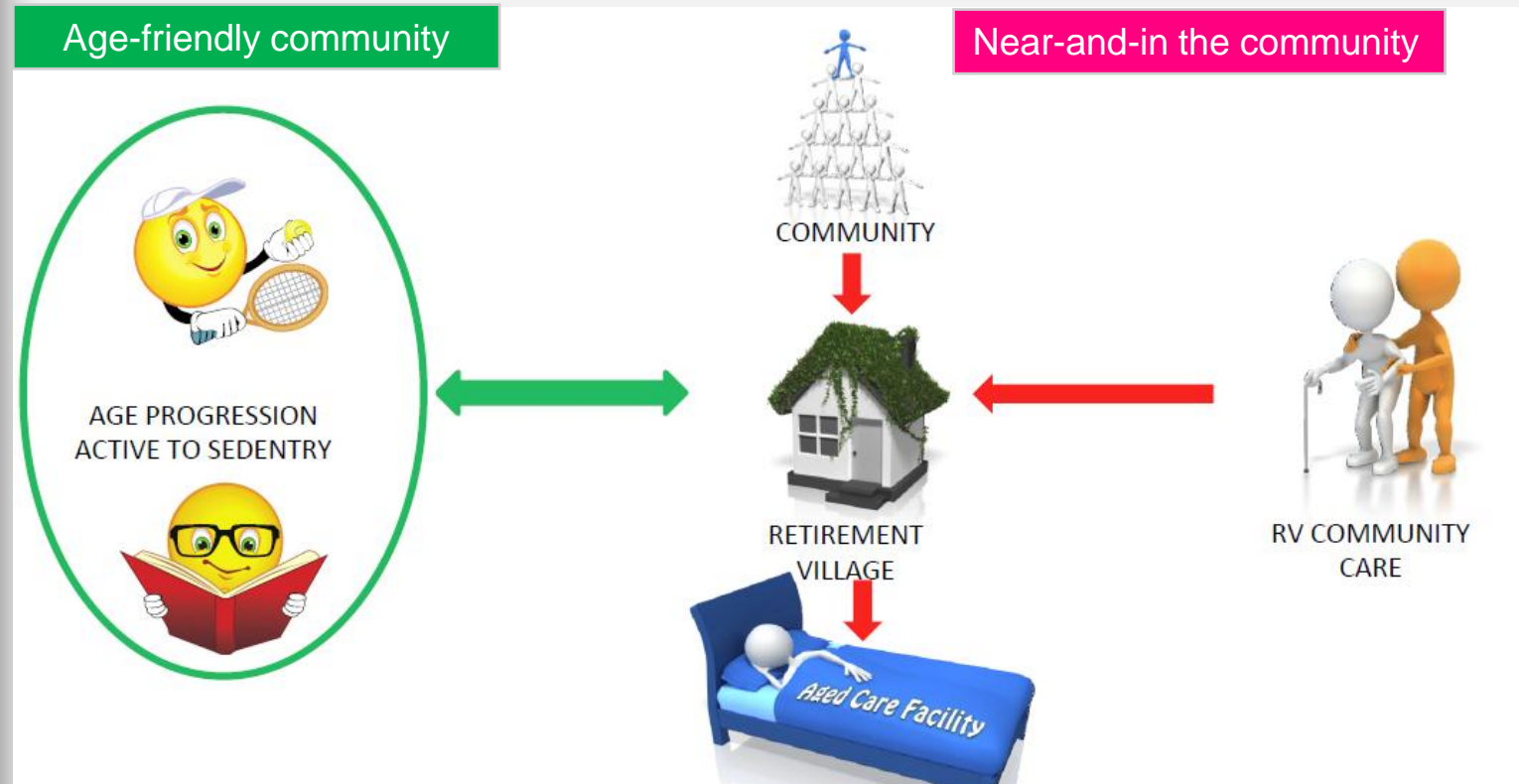
- Life long learning & volunteering: [more structured & systematic](#)

Living Environment

- Universal & barrier free living: [transport & physical environment](#)
- Affordable & accessible housing & supportive facilities: [shelter of comfort](#)
- Uses of assistive living technologies e.g. location & mobility devices: [LTC](#)

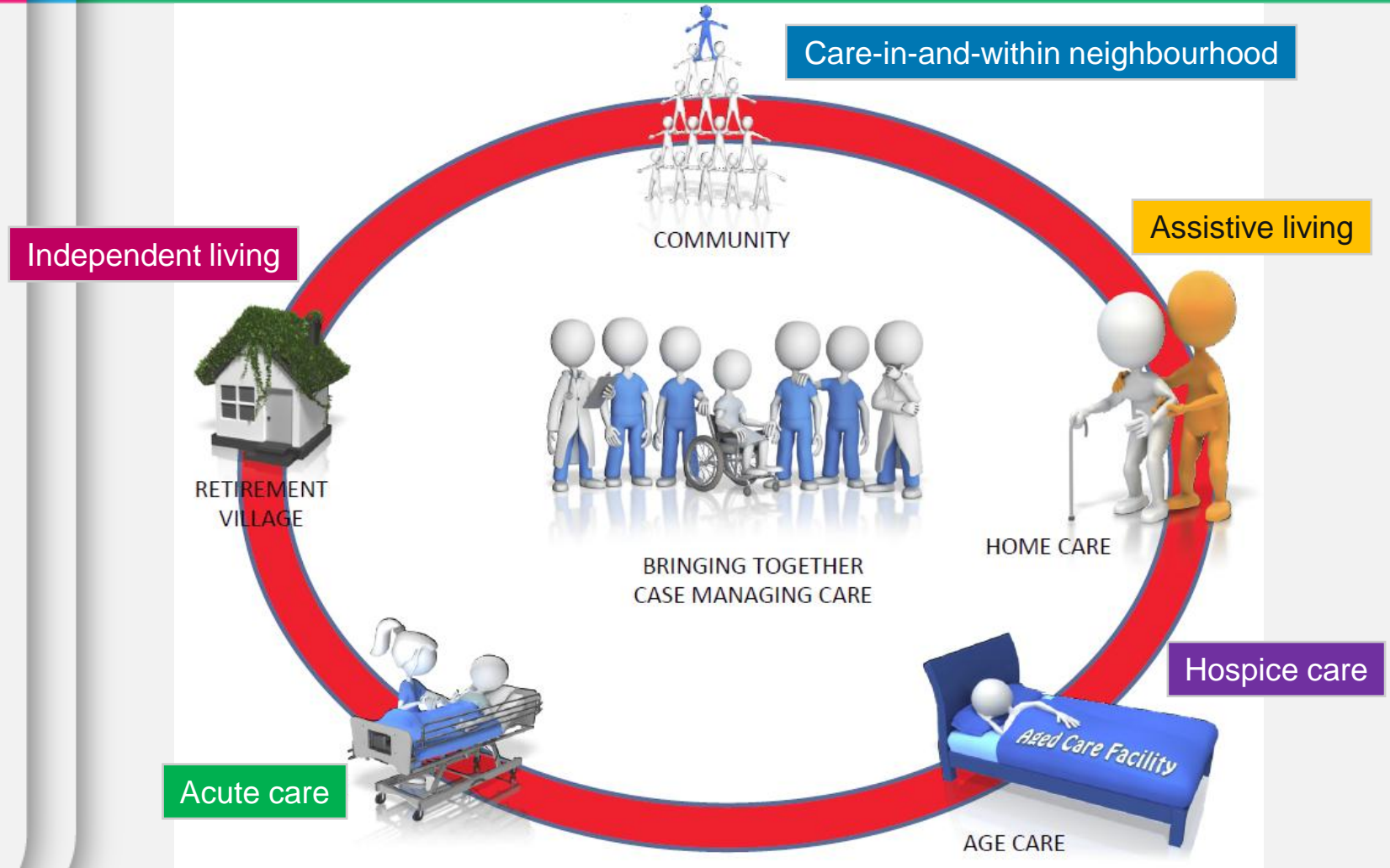
A glimpse into the future: everything-in-place

- Community for ageing NOT ageing community



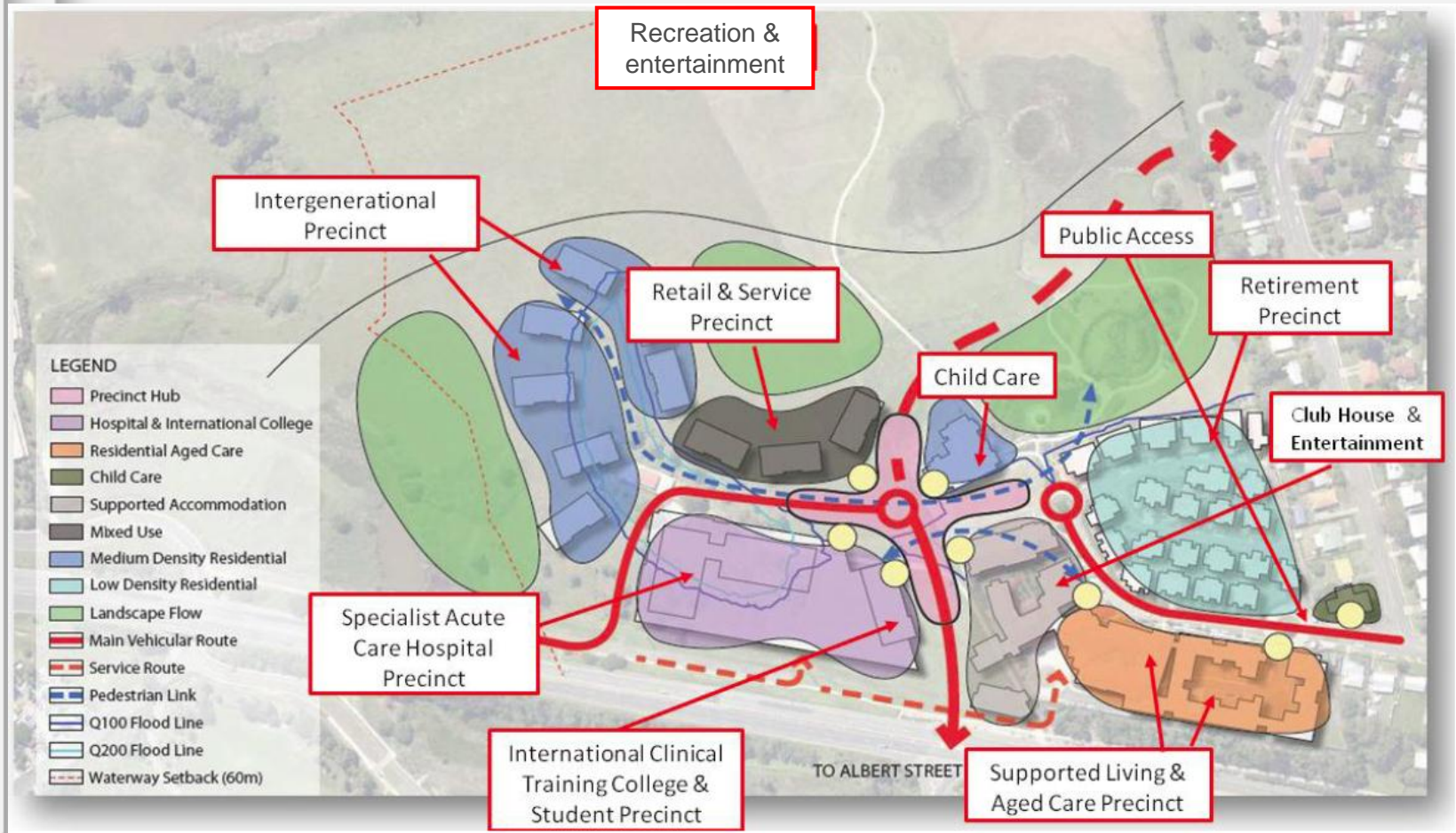
Comprehensive care package in one place

Future Long Term Care



Collective concern, individual care

Ageing in situ, 1-hour living circle



Whichever policy, whatever you do, always remember:
Save! Save! Save!

One simple message for every citizen
from young to old:

Save MONEY

Save HEALTH

Save FRIENDS (young ones!!!)

