



**HONG KONG  
HOUSING SOCIETY**  
香港房屋協會

**Press Release**

15 March 2010

**Housing Society Launches Remaining  
Sandwich Class Housing Scheme Units**

The Hong Kong Housing Society (Housing Society) announced to release immediately 374 additional Sandwich Class Housing Scheme (SCHS) units at Highland Park in Kwai Chung, The Cascades in Ho Man Tin and The Pinnacle in Tseung Kwan O for sale. Together with the 464 units at The Pinnacle launched earlier, the Housing Society has cleared all its remaining stock of SCHS units.

Highland Park is situated at Kwai Chung mid-level with a delightful open view and comprehensive facilities. The 161 units for sale are all of three-bedroom and two-living-room design with sizes ranging from 727 to 816 sq ft. Sale prices range from \$2,170,000 to \$2,520,000 at an average of \$3,100 psf.

The Cascades, located at Ho Man Tin, is popular for its excellent school network and transport convenience. There are 32 two-bedroom and two-living-room units with gross floor area ranging from 681 to 688 sq ft, selling between \$2,320,000 and \$2,640,000 at an average of \$3,700 psf.

The additional units launched at The Pinnacle are all located in Block 1 with sizes ranging from 681 to 826 sq ft, of which 140 and 41 units are of three-bedroom and two-bedroom design respectively. Sale prices range from \$1,580,000 to \$2,640,000 at an average of about \$3,000 psf.

The prices are set with reference to the recent transactions of the SCHS estates concerned on the secondary market and the affordability of the eligible applicants. The discount rate remains at 23%. The eligibility of application and priority for flat selection for this batch of units will also remain the same as the previous arrangement. The Housing Society will continue to provide guarantee for buyers to obtain mortgage up to 90% of the property price from banks and other recognised financial institutions.

HKHS Spokesman said, “The Housing Society has been in close dialogue with the Transport and Housing Bureau to discuss the arrangement for the disposal of the remaining SCHS flats. In view of the overwhelming response to The Pinnacle, HKHS and the Transport and Housing Bureau decided to launch the remaining SCHS units to meet market demand.”

Eligible applicants should submit the completed application form before 7 April. The application forms distributed since 3 March for The Pinnacle are also applicable to this batch of units. Applicants who have submitted application forms can choose any of the units on offer and therefore need not re-apply. Balloting will be postponed to 22 April.

From 23 March to 7 April, two standard units at Highland Park will be open for viewing daily from 10:00 am to 6:00 pm. The Housing Society will provide free shuttle service between Tsuen Wan MTR station and Highland Park on Saturdays, Sundays and public holidays.

One on-site show flat and a standard flat will be available for viewing at The Cascades. Visitors have to make prior appointment in person at the Management Office of Chun Seen Mei Chuen (Address: G/F, Chi Chun Lau, 21 Fu Ning Street, Kowloon City, Kowloon) starting from 16 March for viewing sessions while quota lasts. Meanwhile, the show flats at The Pinnacle will be open as scheduled till 22 March.

Relevant property information and application form are available on the website of the Housing Society ([www.hkhs.com](http://www.hkhs.com)). Members of the public may call the SCHS sales hotline at 28943222 for enquiries.

(Encl: Property information)

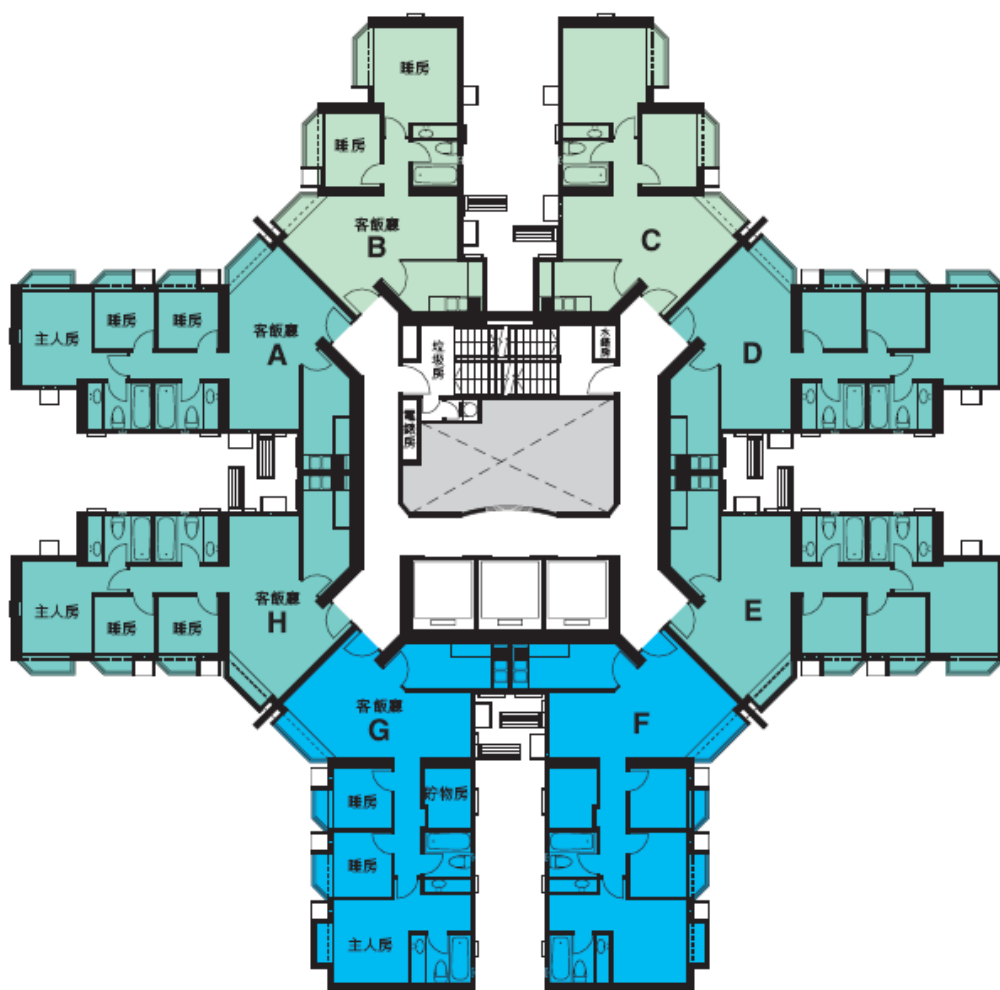
~End~

### **Additional SCHS Flats for Sale – Property Information**

|                                 | <b>The Pinnacle</b>  |                  | <b>Highland Park</b>   | <b>Cascades</b>   |
|---------------------------------|--|------------------|--|---|
| Address                         | 8 Wan Hang Road, Tseung Kwan O   |                  | 11 Lai Kong Street, Kwai Chung   | 93 Chung Hau Street, Ho Man Tin   |
| Year of Completion              | 1998   |                  | 1998   | 1998  |
| No of Residential Tower         | 4  |                  | 6  | 4   |
| No of Storey                    | Blocks 1 & 4: 45 storeys<br>(Residential)<br><br>Blocks 2 & 3: 44 storeys<br>(Residential) |                  | Blocks 1 & 2: 29 storeys<br>(Residential)<br><br>Blocks 3, 4, 5 & 6: 31 storeys<br>(Residential) | Blocks 1 & 2 : 19 storeys<br>(Residential)<br><br>Blocks 3 & 4 :18 storeys<br>(Residential) |
| No of Flats per floor           | 8  |                  | 8  | 3-10  |
| Total No of Flats               | 1,424  |                  | 1,456  | 712   |
| No of Flats Sold                | 779  |                  | 1,295  | 680   |
| No of Flats Launched for Sale   | 464  |                  | --   | --  |
| No of Additional Flats for Sale | 181  |                  | 161  | 32  |
| Additional Flats for Sale       | <u>2-bedroom</u>   | <u>3-bedroom</u> | <u>3-bedroom</u>   | <u>2-bedroom</u>  |
| GFA (ft²)                       | 601  | 742 – 826        | 727 – 816  | 681 – 688   |
| No. of Units                    | 41   | 140              | 161  | 32  |
| Recreational Facilities         | Podium Garden, Children Play Area, Games Room, Aerobic Dancing Room and Gymnasium          |                  | Podium Garden with Swimming Pool, Children Play Area, Table-tennis Room, Games Room, Gymnasium   | Podium Garden   |
| No of Car Parking Spaces        | 476  |                  | 364  | 178   |

疊翠軒 – 第一座平面圖

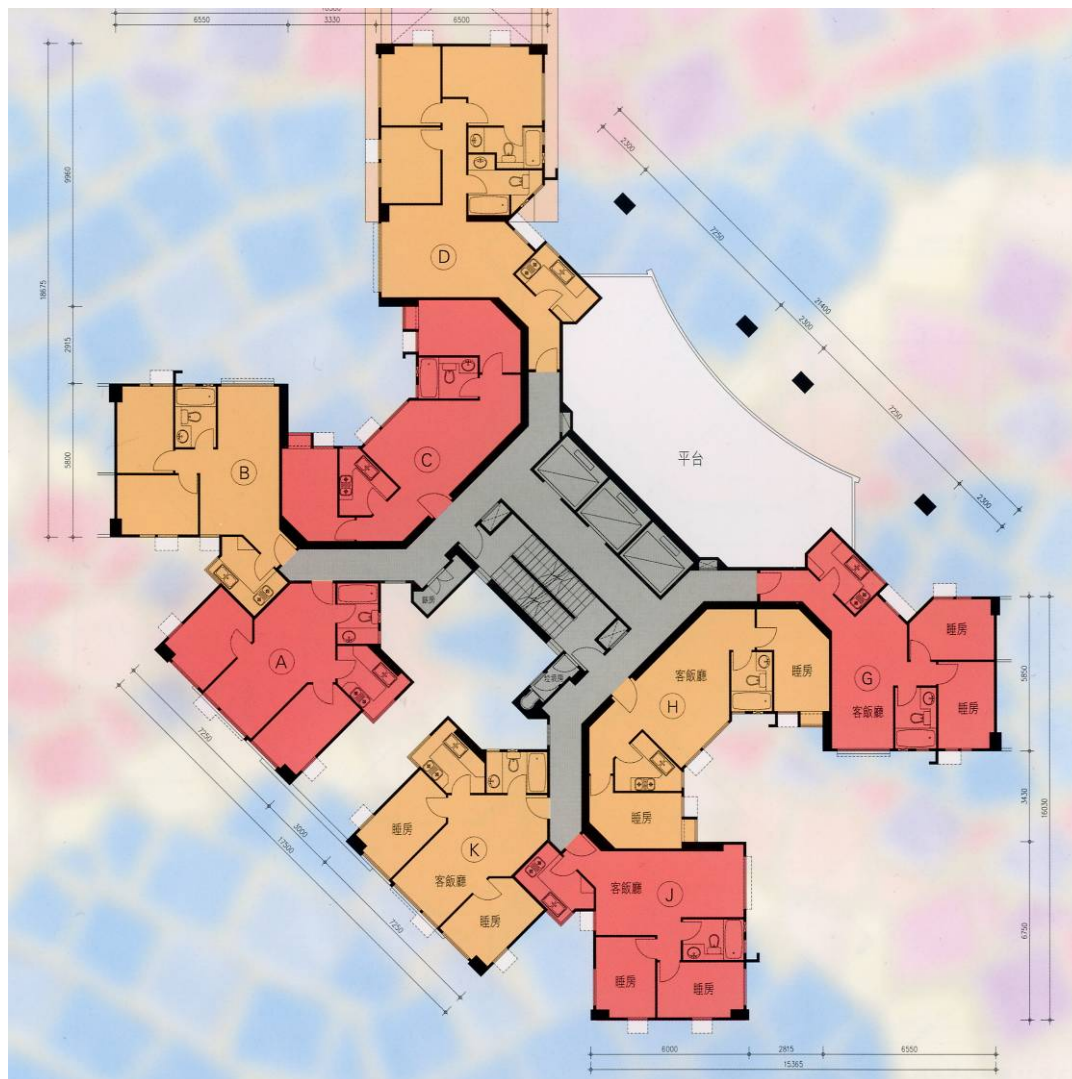
The Pinnacle – Blocks 1 Floor Plan



|                    | 單位面積<br>Flat Size Range              |
|--------------------|--------------------------------------|
|                    | 建築面積 (平方呎)<br>GFA (ft <sup>2</sup> ) |
| 2 房單位<br>2-Bedroom | 601                                  |
| 3 房單位<br>3-Bedroom | 742 – 826                            |

欣圖軒 – 第二座平面圖

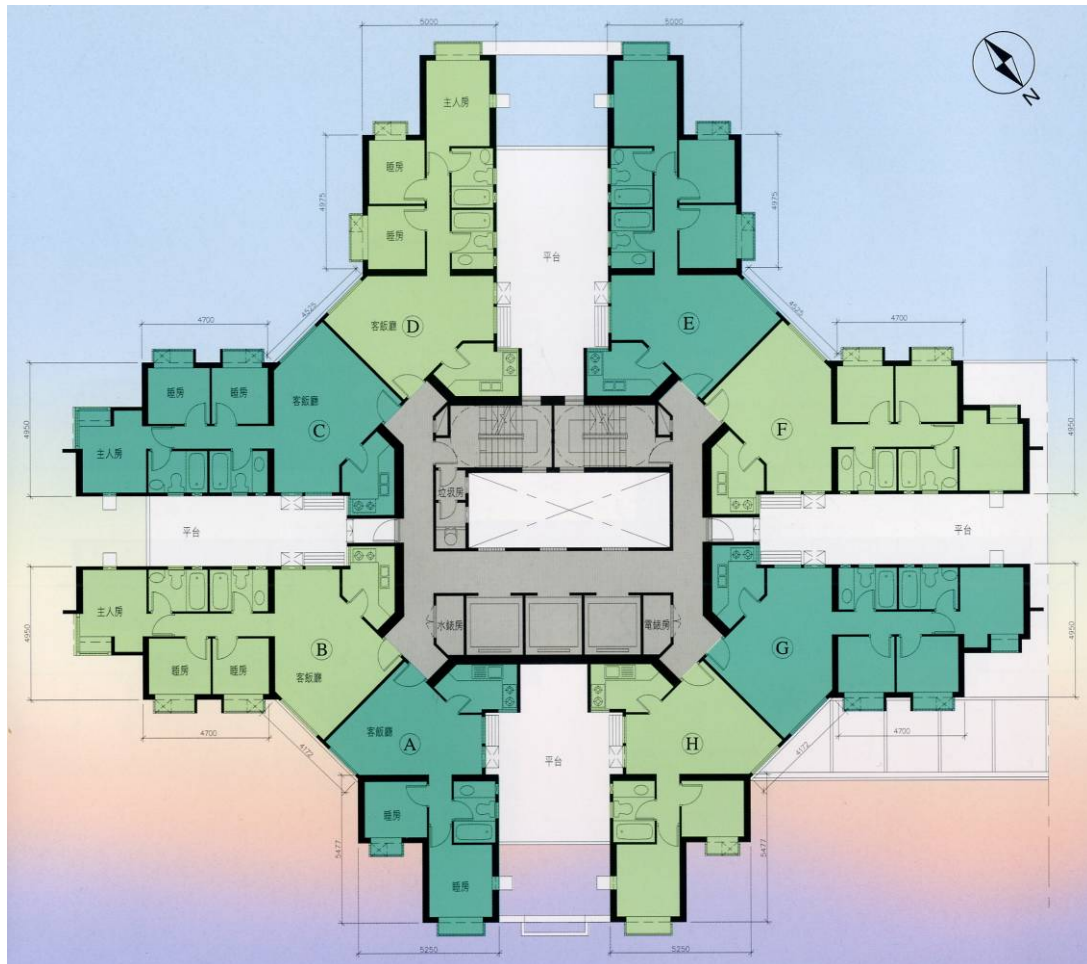
**Cascades – Block 2 Floor Plan**



|                    | 單位面積<br>Flat Size Range              |
|--------------------|--------------------------------------|
|                    | 建築面積 (平方呎)<br>GFA (ft <sup>2</sup> ) |
| 2 房單位<br>2-Bedroom | 681 – 688                            |

# 浩景臺 – 第一座平面圖

## Highland Park – Blocks 1 Floor Plan



|                    | 單位面積<br>Flat Size Range              |
|--------------------|--------------------------------------|
|                    | 建築面積 (平方呎)<br>GFA (ft <sup>2</sup> ) |
| 3 房單位<br>3-Bedroom | 727 – 816                            |